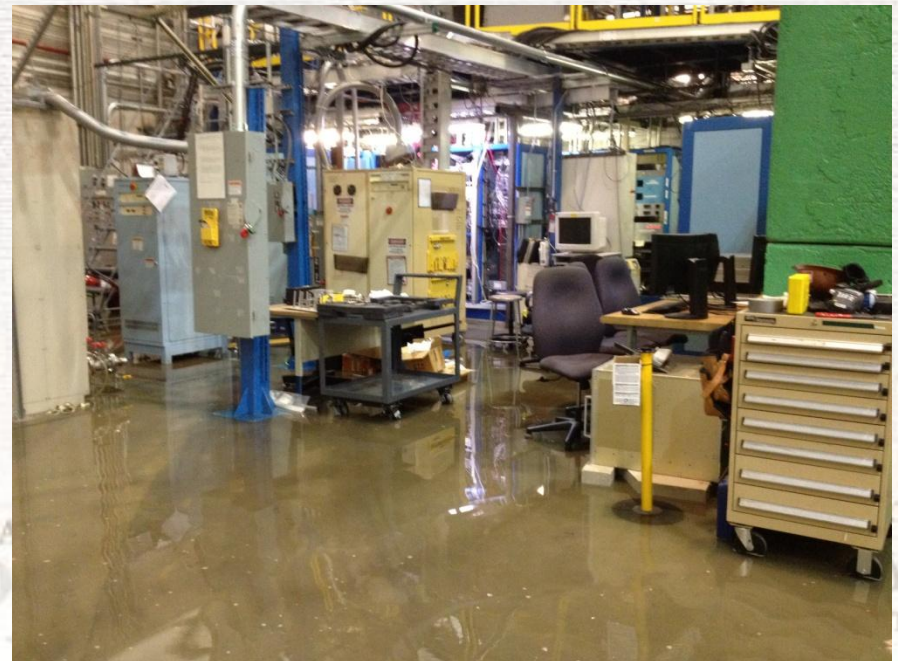
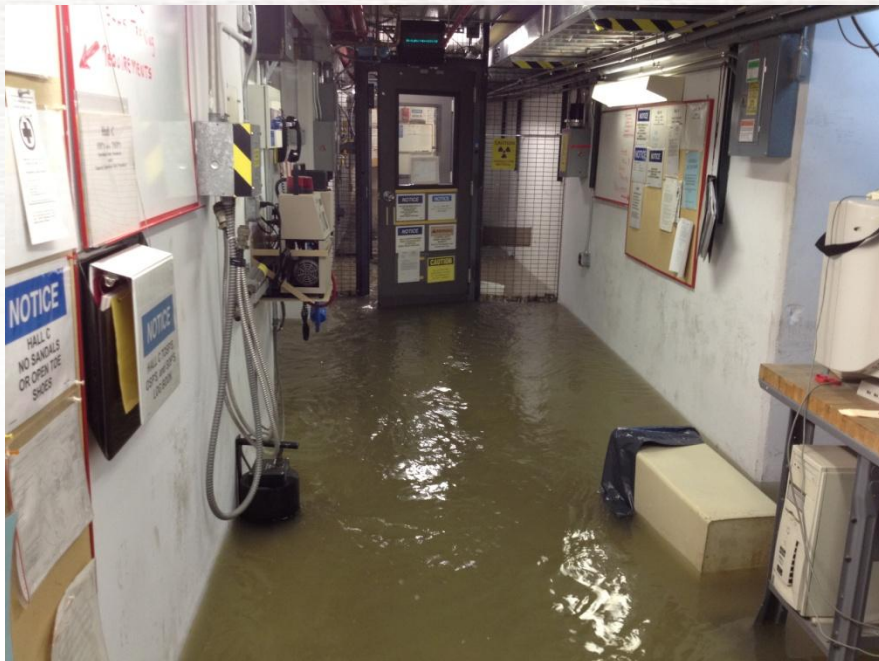
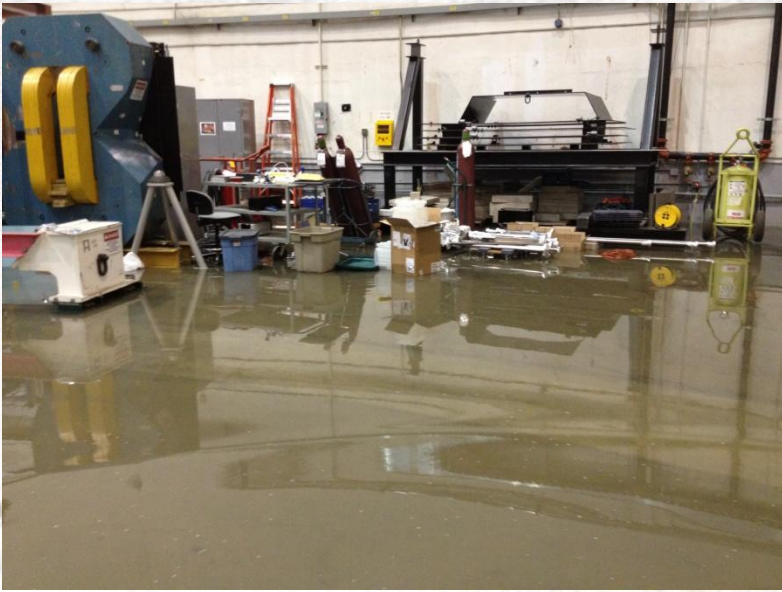
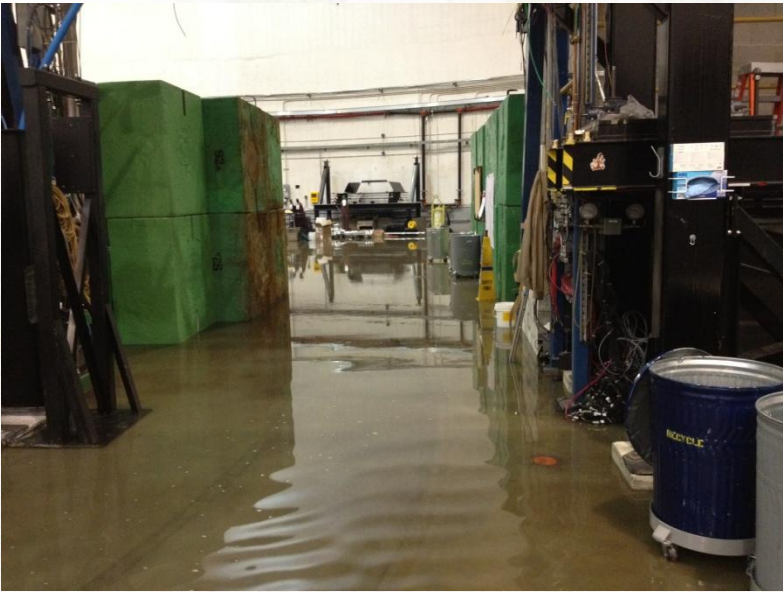


Hall A Damage Report

	Damage	Minimum Estimate		Maximum Estimate	
		Time	Cost	Time	Cost
HALL A	A.1. Replace 4 - 1000W UPS Systems	1 wk	\$2,000	3 wks	\$2,000
	A.2. Repair/Replace 4 – Input/Output Controllers	1 wk	\$0	1 wk	\$20,000
	A.3. Repair/Replace 16 – Bogie Controllers	1 wk	\$0	1 wk	\$16,000
	A.4. Replace Damaged Computing Equipment	3 wks	\$2,000	3 wks	\$10,000
	A.5. Replace Data Acquisition Controllers	2 wks	\$0	2 wks	\$14,000
	Total Hall A:		-	\$4,000	-

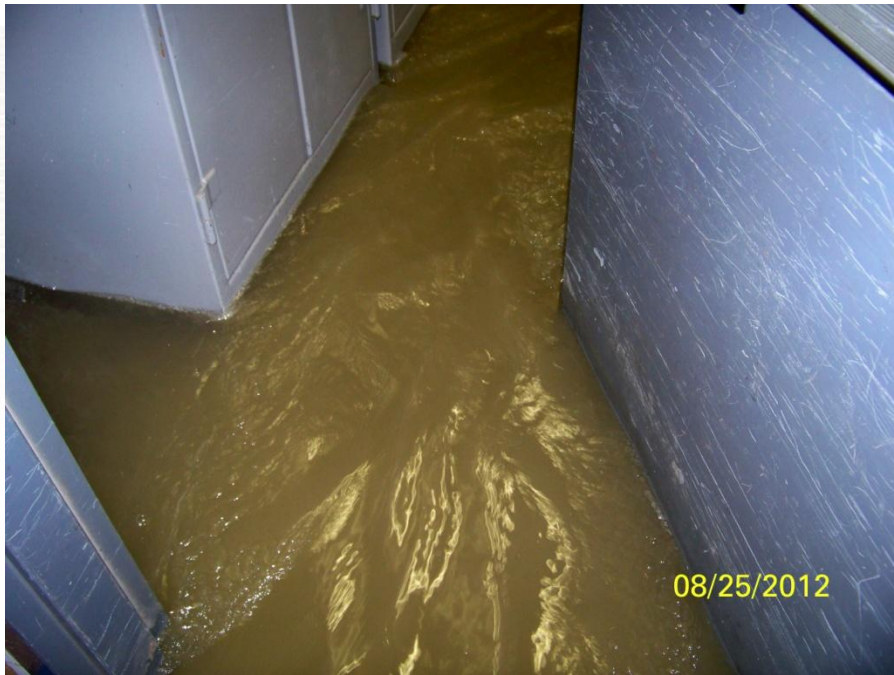


Hall A Flooding (Continued)

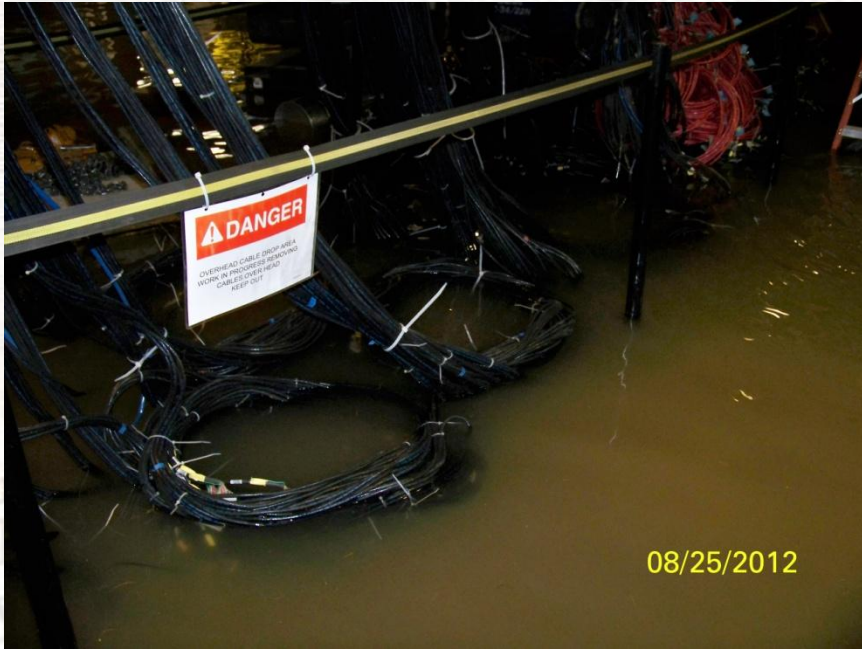
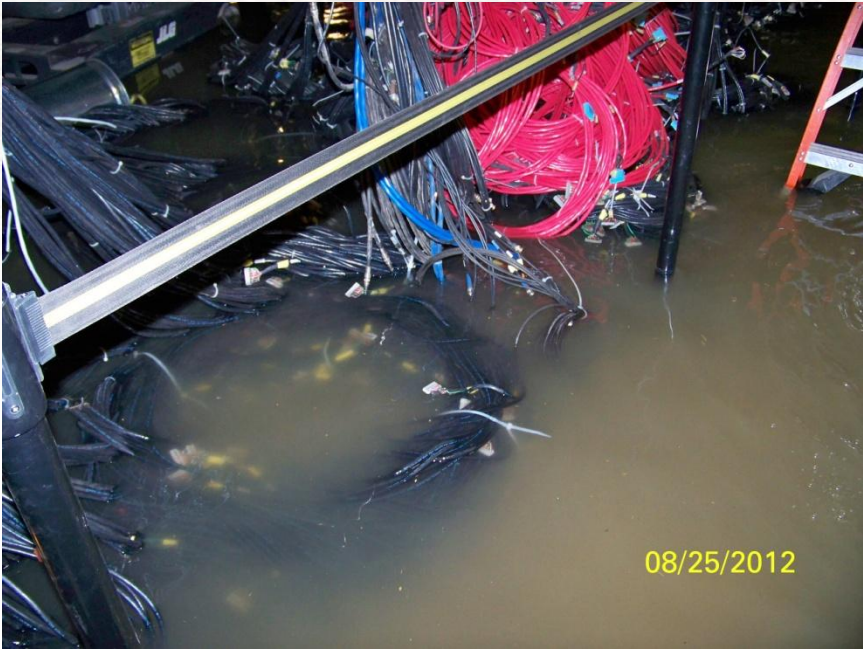
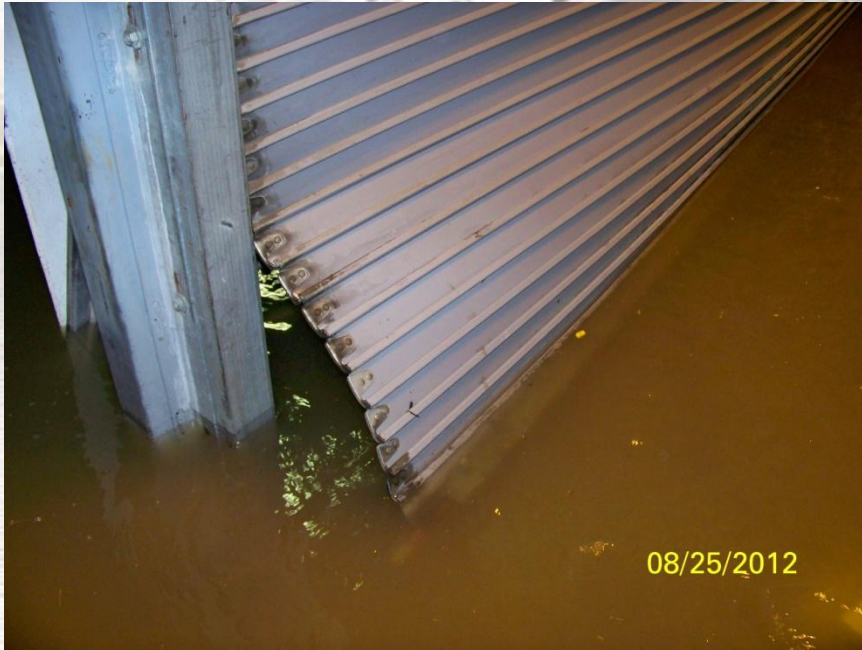


Hall B Damage Report

Damage		Minimum Estimate		Maximum Estimate	
		Time	Cost	Time	Cost
HALL B	B.1. Repair/Replace Drift Chamber Signal Cables	2 wks	\$0		Unknown
	B.2. Repair/Replace Drift Chamber High Voltage Cables	1 wks	\$0		Unknown
	B.3. Repair/Replace CLAS 6 Electronics	1 wks	\$0		Unknown
	B.4. Pump-out Flooded Tagger Dump	2 wks	\$0	2 wks.	\$0
	B.5. Repair/Replace Lower Truck Ramp Overhead Door	4 wks	\$5,000	4 wks	\$15,000
	B.6. Repair/Replace Turbo Q Vacuum Pumps and Spare Tagger Turbo Pump	1 wk	\$0	4 wks	\$75,000
	Total Hall B:	-	\$5,000	-	\$90,000



Hall B Flooding (Continued)



T-RAY
YPE
TIONS
SC

Hall C Damage Report

Damage	Minimum Estimate		Maximum Estimate	
	Time	Cost	Time	Cost
C.1. Replace 50 – 120 Volt Electrical Receptacles	2 wks	\$5,000	2 wks	\$5,000
C.2. Repair/Replace 2 – JLG Man Lifts	2 wks	\$6,250	8 wks	\$100,000
C.3. Repair/Replace Scissor Lift	2 wks	\$3,000	8 wks	\$24,000
C.4. Replace 12 – Vacuum Pumps	4 wks	\$180,000	8 wks	\$180,000
C.5. Replace Damaged Power Tools	1 wk	\$3,000	1 wk	\$15,000
C.6. Replace Damaged Network Switch	1 wk	\$2,400	1 wk	\$2,400
C.7. Clean QTOR Magnet Coils	1 wk	\$0	1 wk	\$0
C.8. Replace Bogey Motors	1 wk	\$1,500	1 wk	\$1,500
C.9. Clean and Oil Rusted Material Handling Equipment	1 wk	\$0	1 wk	\$0
C.10. Clean and Oil Rusted Detector Rails	1 wk	\$0	1 wk	\$0
C.11. Replace Target Group Micro-Drive Power Supplies	4 wk	\$30,000	8 wk	\$30,000
C.12. Replace Target Group Power 10 Heater Supplies	4 wk	\$20,000	8 wk	\$20,000
C.13. Replace Large Power Supplies	4 wk	\$150,000	8 wk	\$150,000
C.14. Replace Inundated Circuit Breakers	4 wk	\$5,000	8 wk	\$50,000
C.15. Replace Miscellaneous Electronics, Equipment, and Golf Cart	4 wk	\$10,000	8 wk	\$90,000
Total Hall C:	-	\$416,150	-	\$667,900

HALL C

PARITY VIOLATION SHORT-RANGE
 FORM FACTORS HYPERSCALE
 PARTITION DISTRIBUTION FUNCTIONS
 DEEPLY VIRTUAL COMPTON SC

Hall C Flooding (Continued)



PARITY VIOLATION
FORM FACTORS
DEEPLY VIRTUAL COMPTON SC

SHORT-RANGE
HYPER
PARTON DISTRIBUTION FUNCTIONS

Hall C Flooding (Continued)



Experimental Hall C: 08/25/2012 08:07

PARITY VIOLATION SHORT-RANGE
FORM FACTORS HYPERSURFACES
PARTON DISTRIBUTION FUNCTIONS
DEEPLY VIRTUAL COMPTON SCATTERING

Hall D and Engineering Damage Reports

Damage		Minimum Estimate		Maximum Estimate	
		Time	Cost	Time	Cost
HALL D	D.1. Hall D Reports No Appreciable Damage		0		0
	Total Hall D:	-	0	-	0

Damage		Minimum Estimate		Maximum Estimate	
		Time	Cost	Time	Cost
ENG	ENG.1. Personnel Safety System Repair/Replace/Maintain	2 wk	\$11,625	4 wk	\$11,625
	ENG.2. Hall A Instrumentation & Controls	1 wk	\$12,000	1 wk	\$12,000
	ENG.3. Hall C Instrumentation & Controls	16 wk	\$124,000	16 wk	\$178,000
	Total Engineering:	-	\$147,625	-	\$201,625
Grand Total All Experimental Halls:		-	\$572,775	-	\$1,021,525

